

# Muswellbrook Solar Farm and BESS Community Newsletter

June 2025



"We are excited to announce the approval of the project by the Minister for Planning.

Catherine Way,  
Director of Development, Australia

Finley Solar Farm, NSW (OX2)

## Development Approval

OX2 are pleased to announce that the Muswellbrook solar farm and BESS has been approved by the NSW Minister for Planning.

Further information on the decision by the Independent Planning Commission (IPC) and relevant documents are available via the OX2 website or via the IPC website <https://www.ipcn.nsw.gov.au/cases/2024/12/muswellbrook-solar-farm>

OX2 will now work towards construction of the project which is anticipated to begin in mid 2026.

## EPBC Approvals

The project is a controlled action under the Commonwealth Environment Protection and Biodiversity Conservation Act (EPBC Act). The project has been assessed under the bilateral agreement between the Australian Government and the NSW Government. This bilateral agreement allows each state or territory to assess projects on behalf of the Australian Government. It removes the need for a separate assessment, reducing duplication.

The Commonwealth Environment Minister uses a state or territory's environmental assessment report to inform the final decision about whether to approve a project. This final decision is expected to take approximately 6 weeks.

## Community Consultation

OX2 wish to continue an open dialogue with the community as the project progresses and welcome the opportunity to discuss the project further with near neighbours. If you would like to meet with a member of the team, please reach out to Helen Kennedy on 0403 920 098 or at [helen.kennedy@ox2.com](mailto:helen.kennedy@ox2.com).

## Project Outline

Muswellbrook Solar Farm is a 135MW solar and battery project located approximately 2.5km east of Muswellbrook, with the majority on the site being land owned by Muswellbrook Coal Company (MCC), a wholly owned subsidiary of Idemitsu Australia Pty Ltd. The project is being developed in partnership with Idemitsu.

Once operational, the solar farm will supply renewable electricity to the national electricity market, generating power for approximately 79,000 Australian homes. The Muswellbrook Solar Farm would require the installation of solar PV panels and associated infrastructure including a 2.5km 132kV transmission line to connect into the grid.

## Great Cattle Dog Muster

OX2 is pleased to announce its sponsorship of the Great Cattle Dog Muster 2025. Members of the project team will be attending the event and are looking forward to discussing the project and answering any questions. Further details will be shared as the event approaches in September 2025.

To receive future Community Updates via email, please provide your email address to [helen.kennedy@ox2.com](mailto:helen.kennedy@ox2.com)



## Local Economic Development

OX2 aim to maximise investment in the regional economy through the engagement of local businesses. We work towards utilising local contractors wherever possible throughout the construction and operation of the project.

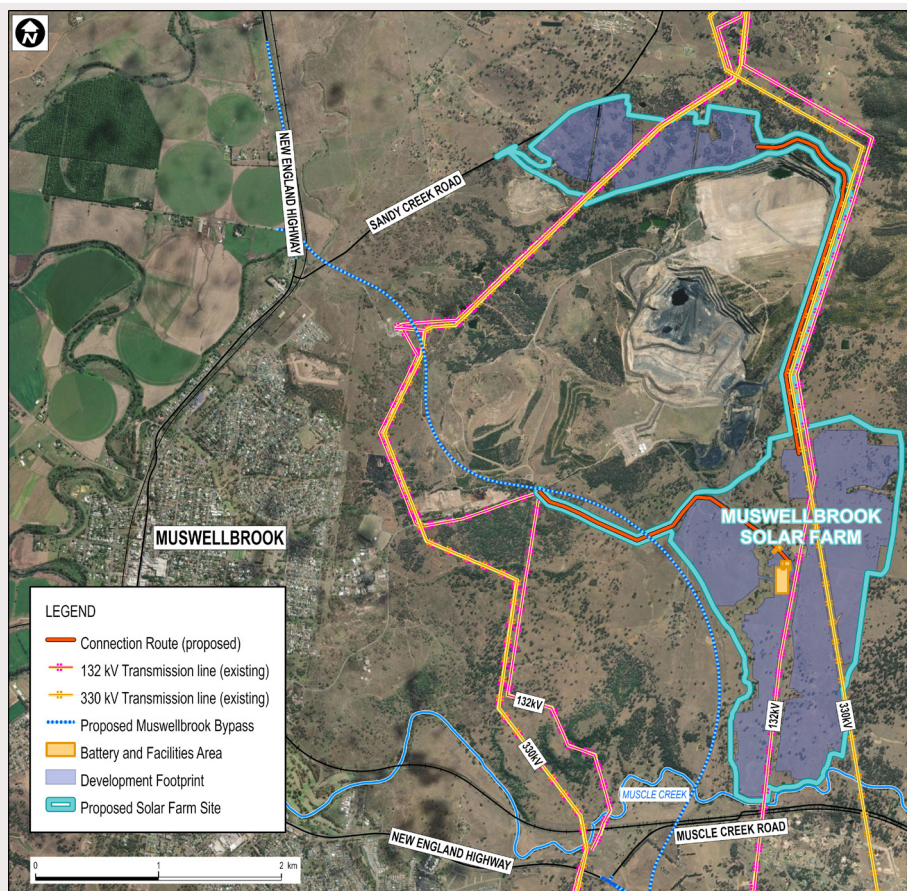
We would welcome contact from local businesses and service providers to register their interest in the project to grow our current database. Businesses and the local community will be advised once the solar farm receives approval, and how to find out more about potential business opportunities.

## Project Facts

Website	<a href="https://www.ox2.com/australia/projects/muswellbrook-solar-farm/">https://www.ox2.com/australia/projects/muswellbrook-solar-farm/</a>
Technology	Photovoltaic Solar Farm & Battery Energy Storage System (BESS)
Solar Farm Capacity	Up to 135MWac
Environmental Benefits	Clean energy to power approximately 79,000 homes & offset approximately 7.6million tonnes (Mt) of CO2e over its operational life
Number of PV Panels	Approximately 300,000
Project Area	482 ha/1191 acres
Location	Approximately 2.5km east of Muswellbrook, NSW

## Acknowledgement

The project is located within the Traditional lands of the Wonnarua people. OX2 wishes to acknowledge them as traditional custodians of the land and pay our respect to Aboriginal and Torres Strait Islander people past and present. We acknowledge their continuous connection to Country.



OX2 Australia  
Suite 403, 65 Dover Street  
Cremorne VIC 3121

03 8595 2406  
info-au@ox2.com  
OX2.com/australia



If you no longer wish to receive Community Updates, please let us know by emailing [info-au@ox2.com](mailto:info-au@ox2.com) or call 03 8595 2406

Powering the  
great shift