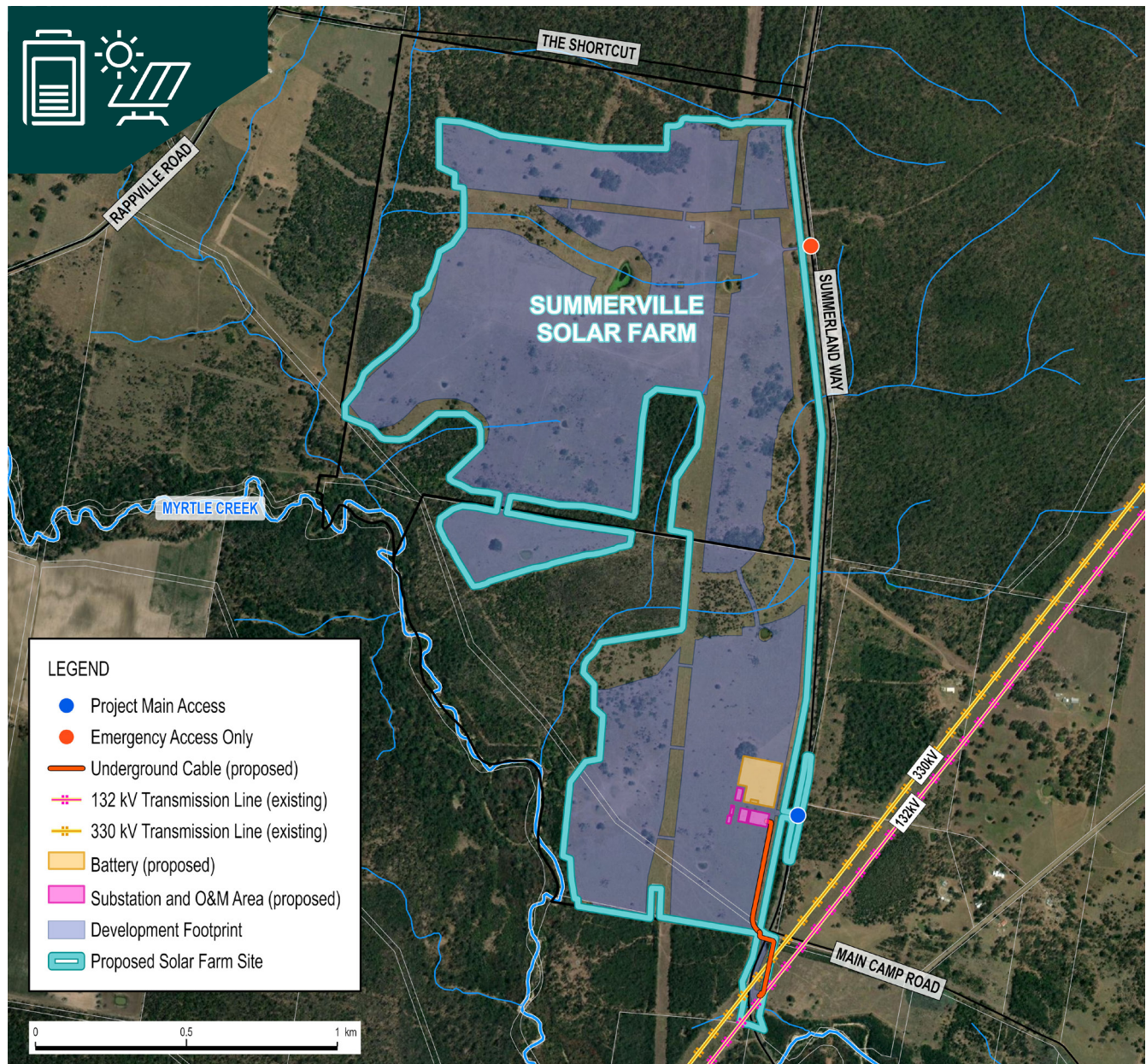


Summerville Solar Farm and Battery Project Information Sheet

May 2025



The Project

OX2 is planning the Summerville Solar Farm, featuring a 90MW solar farm and a Battery Energy Storage System (BESS) of up to 90MW with a development footprint of 182 hectares.

The project is located approximately 3km east of Rappville on private land.

The project will connect to NSW's electricity network via a short underground connection to the existing 132 kV Lismore to Koolkhan overhead line to the southeast of the site.

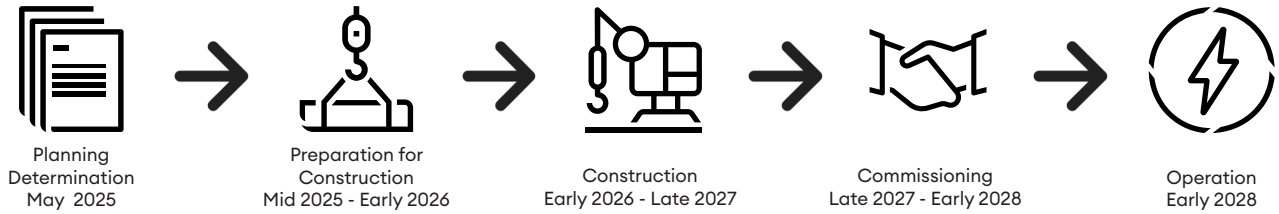
Battery Energy Storage System

The project includes a BESS with a capacity of up to 90MW and up to 4 hours of storage. The BESS will use the same grid connection infrastructure as the solar farm.

Importantly, the battery would enable the project to store energy for dispatch to the grid outside of daylight hours and/or during periods of peak demand, which has potential to contribute to increased grid stability and energy security.

Project Status

We are currently in the early stages of preparing the project for construction which we anticipate will start in mid 2026, and operations in late 2028. The estimated timeline for the Project’s lifecycle includes the following key phases:



Planning Approval Process

The project has been approved by the NSW Minister for Planning under the NSW’s Environmental Planning and Assessment Act 1979 (the EP&A Act).

The project was approved in May 2025.

The project is a controlled action under the Commonwealth Environment Protection and Biodiversity Conservation Act (EPBC Act). The project has been assessed under the bilateral agreement between the Australian Government and the NSW Government.

Project Benefits

The Project is expected to deliver affordable, clean, and reliable electricity for NSW while offering economic, social, and environmental benefits, including:

- Powering up to 36,000 NSW’s homes with clean energy.
- Storing up to 90 MW of energy to provide up to approximately 4 hours of electricity.
- Creating up to 200 jobs during construction and 6 operational roles.
- Funding community benefit programs.
- Enabling greater integration of renewable energy into the grid to help reduce market volatility
- Reducing up to 5.9 million tonnes of carbon emissions.
- Supporting NSW’s target of reducing emissions by 70% on 2005 levels by 2035 and net zero by 2025.

Fast Facts

Local Government Area	Richmond Valley Council
Location	3km East of Rappville
Traditional Custodians	Bundjalung People
Solar Farm Capacity	90 MW
Energy Production	231 GWh
Development Footprint Size	182 hectares / 450 acres
Number of panels	Approx 215,000
Size of Battery	Up to 90MW / 4 hours
Number of containers	Up to 180
Homes supplied	Approx 36,000
CO2 saved over operational life	Approx 5.9 million tonnes
Jobs created during construction	Up to 200
Jobs created during operation	Up to 6

The information provided in this factsheet was accurate at the time of publication; however, some details may change as the project progresses

Community Benefits

We are dedicated to delivering long-term benefits to the communities in which are projects are located.

Summerville solar farm will contribute to the Richmond Valley Council contributions plan under Section 7.12 of the Environmental Planning and Assessment Act.

These funds will support Council’s infrastructure works.

Powering
the great
shift

OX2 Australia
Suite 403, Level 4/65 Dover Street
Cremorne VIC 3121

03 8595 2406
info-au@ox2.com
OX2.com/australia



The project is located within the Traditional lands of the Bundjalung people. OX2 wishes to acknowledge them as traditional custodians of the land and pay our respect to Aboriginal and Torres Strait Islander people past and present. We acknowledge their continuous connection to Country.



Signatory of the CEC Best Practice Charter for Renewable Energy Projects