

Kariboe Wind Farm and Battery

Project Information Sheet

May 2026



The Project

OX2 is planning the Kariboe Wind Farm and Battery, featuring a 225 MW wind farm and a Battery Energy Storage System (BESS) up to 225 MW with a duration of up to 4 hours.

OX2 acquired the Project from BayWa r.e. in mid 2025.

The Project area spans approximately 14,000ha, however, the Project footprint represents a small portion of that area, including approximately 7ha for the BESS.

The site is located approximately 35 kilometres southeast of Biloela and 35 kilometres northwest of Monto in Central Queensland, on private land.

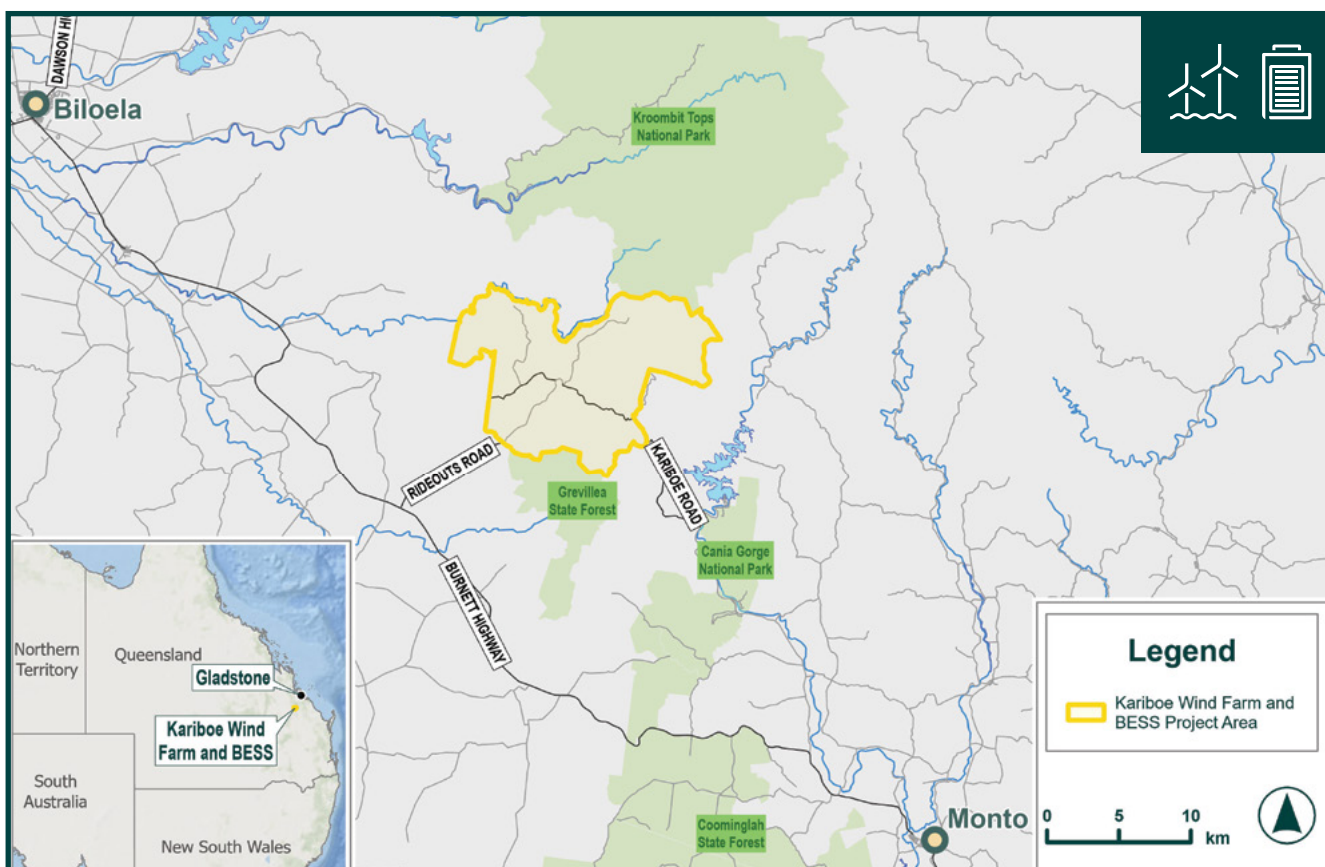
The Project will connect to Queensland's electricity network via a switching station linked to the existing 275kV Calvale to Halys double circuit transmission line.

No additional line is required to connect the Project to the existing network.

Project Benefits

The Project is expected to deliver affordable, clean, and reliable electricity for Queensland while offering economic, social, and environmental benefits, including:

- Powering up to 90,000 Queensland homes with clean energy.
- Offsetting 430,000 tonnes of CO² annually.
- Storing energy in BESS for dispatch when needed most, increasing grid stability and security.
- Creating procurement and employment opportunities during construction and operations.
- Funding community benefit programs.
- Enabling greater integration of renewable energy into the grid to help reduce market volatility.
- Supporting Queensland's renewable energy and net zero targets.

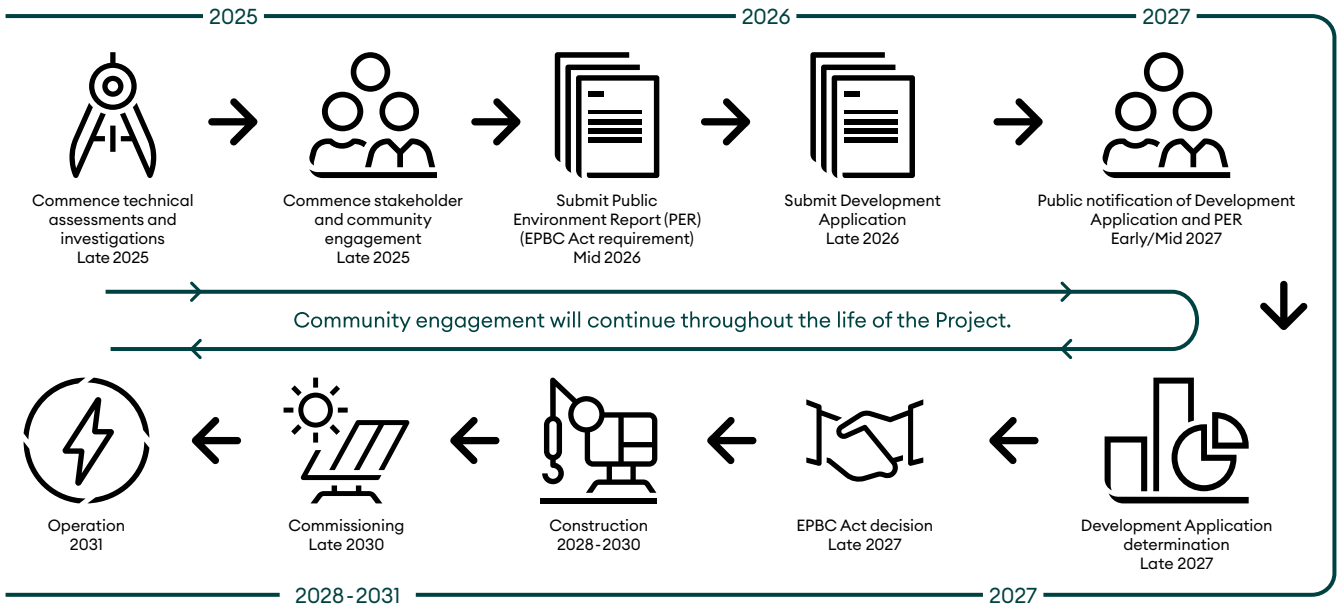


Community Engagement

OX2 is committed to collaborating with the local community, Banana Shire Council, North Burnett Regional Council and Traditional Custodians to understand community views and aspirations and to design a Community Benefit Agreement that drives positive economic and social value. Community engagement activities began in late 2025 and will continue throughout the life of the Project

Project Status

We are currently in the early stages of the Project’s development and anticipate starting construction in 2028, and operations in 2031. The estimated timeline for the Project’s lifecycle includes the following key phases:



Planning Approval Process

We are preparing the planning and technical assessments for a development application under the State Planning Act 2016 and in accordance with the new State Code 23 requirements.

The Project has been referred to the Department of Climate Change, Energy, the Environment and Water under the Commonwealth Environmental Protection and Biodiversity Act 1999 (EPBC Act).

It was determined by the Minister for Environment that the Project is a ‘controlled action’ that requires formal assessment and approval under the EPBC Act. We are undertaking further ecological studies required to prepare the Public Environment Report.

Fast Facts (Approximate estimates based on current Project size)

Local Government Area	Banana Shire Council (BSC) and North Burnett Regional Council (NBRC)
Location	35 kilometers southeast of Biloela and 35 kilometers northwest of Monto
Traditional Custodians	Gaangalu People and the First Nations Bailai, Gurang, Gooreng Gooreng Taribelang Bunda people
Wind Farm Capacity	225 MW
Battery Size	Up to 225MW
Number of Wind Turbines	Approximately 40
Turbine Tip Height	Up to 260m
Number of Battery Containers	Approximately 150
Homes Supplied	Approximately 90,000 average Australian homes
CO ² Saved	Approximately 430,000 tonnes per annum
Project Life	35 years
Jobs created during construction (peak)	Approximately 250
Jobs created during operation	Approximately 12

The information provided in this fact sheet was accurate at the time of publication; however, some details may change as the project progresses.



OX2 Australia
 Suite 403, Level 4/65 Dover Street
 Cremorne VIC 3121
 1800 998 205



info-au@ox2.com
 OX2.com/australia

OX2 acknowledges the Gaangalu People and the First Nations Bailai, Gurang, Gooreng Gooreng Taribelang Bunda people as Traditional Custodians of the land on which the Project is located. We pay respect to Elders past and present and all First Nations peoples. We acknowledge their continuous connection to Country and wish to work together in the spirit of reconciliation.



Signatory of the CEC Best Practice Charter for Renewable Energy Projects