

Summerville Solar Farm Community Newsletter

December 2024



"We continue to move forward with the project's development and look forward to an outcome on the application in the coming months.

Catherine Way, Director of Development, OX2

Finley Solar Farm, NSW (OX2)

Project Update

Summerville Solar Farm is a 90MW solar and battery project located approximately 3km east of Rappville, NSW. Once operational, the solar farm will supply renewable electricity to the national electricity market, generating power for approximately 55,000 Australian homes. The Summerville Solar Farm would require the installation of solar PV panels and associated infrastructure including a short 132kV underground transmission line to connect into the grid.

- A Development Application was submitted to the NSW Department of Planning, Housing and Infrastructure, in October 2023.
- The application was exhibited on the Major Projects website for 28 days and 40 submissions were received from the public.
- The Department of Planning, Housing and Infrastructure is now assessing the application and an outcome is expected early in 2025.
- All information and relevant documents are available on the Major Projects Website:

<https://www.planningportal.nsw.gov.au/major-projects/projects/summerville-solar-farm>

Community Consultation

OX2 wish to continue an open dialogue with the community as the project progresses and welcome the opportunity to discuss the project further with near neighbours. If you would like to meet with a member of the team, please reach out to Helen Kennedy on 0403 920 098 or at helen.kennedy@ox2.com.



Finley Solar Farm, NSW (OX2)

To receive future Community Updates via email, please provide your email address to helen.kennedy@ox2.com

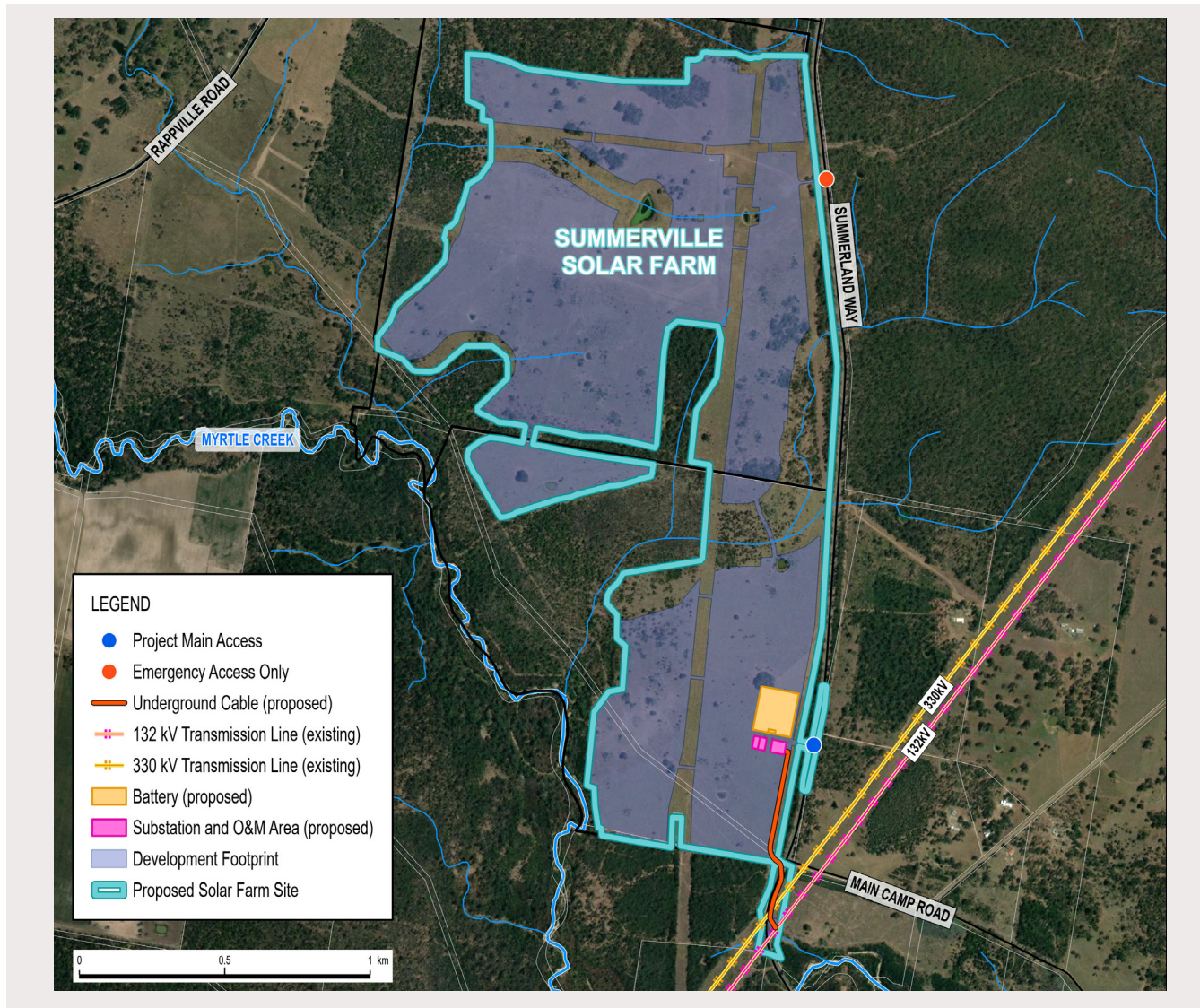
Local Economic Development

OX2 aim to maximise investment in the regional economy through the engagement of local businesses. We work towards utilising local contractors wherever possible throughout the construction and operation of the project.

We would welcome contact from local businesses and service providers to register their interest in the project to grow our current database. Businesses and the local community will be advised once the solar farm receives approval, and how to find out more about potential business opportunities.

Project Facts

Website	https://www.ox2.com/australia/projects/summerville-solar-farm/
Technology	Photovoltaic Solar Farm & Battery Energy Storage System (BESS)
Solar Farm Capacity	Up to 90MWac
Environmental Benefits	Clean energy to power approximately 55,000 homes & offset approximately 5.9 million tonnes (Mt) of CO2e over its operational life
Number of PV Panels	Approximately 215,000
Project Area	240 ha/594 acres
Location	Approximately 3km east of Rappville, NSW



OX2 Australia
Level 4, 65 Dover Street
Cremorne VIC 3121

03 8595 2406
info-au@ox2.com
OX2.com/australia



If you no longer wish to receive Community Updates, please let us know by emailing info-au@ox2.com or call 03 8595 2406

Powering the great shift